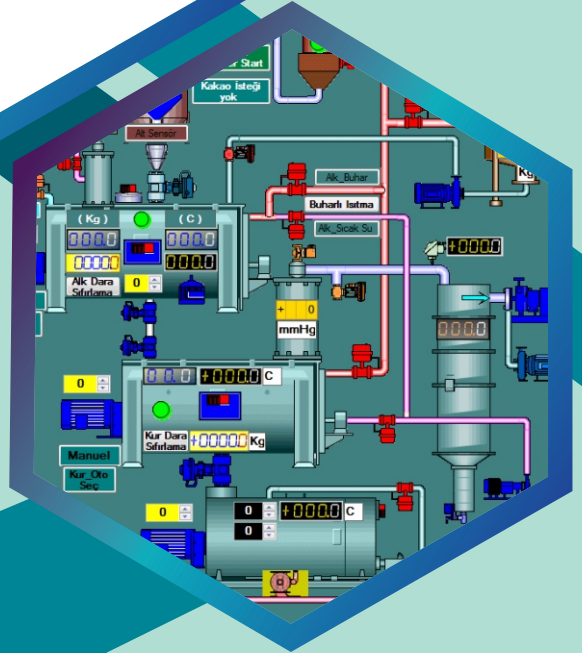


# B L CORPORATION

## INDUSTRIAL COMPUTER



INDUSTRIAL COMPUTER   EMBEDDED PC   POWER SUPPLIES   NETWORKING SWITCHES   SENSORS  
INDUSTRIAL SERVERS   INDUSTRIAL LAPTOP   DESKTOP PC   PANEL PC   DISPLAY   BARCODE READERS

## B L CORPORATION INDUSTRIAL COMPUTER

We would like to introduce ourselves as BL Corporation, manufacturer and supplier of (Advantech, DFI and Faytech Make) Industrial Computer (IPC) and Panel Pcs. B L Corporation is a professional firm based out of the commercial capital of India Mumbai. We offer Integrated Solutions in Industrial Automation and IT System.

Since 2018, B L Corporation has been designing and installing world-class Industrial Automation, Presentation, Solutions and Integrated systems to serve a wide range of environments including Process Automation Industries, Steel Industries, Power sector, Pharma Industries, Corporate and education sector. With a focus on relationship management.

Our company vision is to create satisfied customers and serve quality products and good services to them.



### Industrial Rack mountable PC

4U/3U/2U/1U Rackmountable Industrial PC with Intel Intel core i3/Intel core i5/Intel core i7 CPU /Intel core i9 supports 3rd, 4th Upto 12th Gen. RAM Up to 256Gb Supportable SATA HDD capacity as per requirement, Expansion slots upto 13 slots with PICMG 1.3 backplane/1.0 Backplane.

Operating temperature 0°C - 55°C , Storage temp 0°C - 70°C  
Power supply 430W/450W/500W ATX, It supports dual intel LAN /USB port/LPT Port/Serial Port/Audio ports.



### Industrial Fanless Embedded PC

The fanless PC comes with intel, Core i9 / i7 / i5 / i3 / 6<sup>th</sup> / 7<sup>th</sup> Upto 12<sup>th</sup> Gen and Intel Atom CPU . It offer richer expansions and I/O options that includes intel HD Graphics, HDMI, VGA and DVI-D Interface Dual 2.5 "SATA / SSD drive bays with Raid 0/1 and mSATA socket.

Expansion is made possible via the PCI, PCI Expressx16 , and the full size mini PCIe socket with sim card reader. Power supply 9V DC to 30V DC .Memory capacity upto 64 GB , 3 independent display port , 2xUSB3.0 and 4xUSB 2.0 Ports , Operating Temp 0 °C - 55 °C , Storage Temp 0°C - 75°C.



### Industrial Touch Panel PC

Industrial Panel PC is an all in one system designed around a highly integrated intel 6<sup>th</sup> / 7<sup>th</sup> upto 12<sup>th</sup> Gen Core i7 / i5 / i3 CPU. It supports Touch Panel display from 10.4" , 12.4" , 15" , 17" , 19" , 21.5" TFT Panel and offer I/O and multiple expansions

- Panel display resolution from 800x600 upto 1920x1080
- Contrast Ratio: 400:1 up to 1200:1
- Brightness : 250nits upto 600nits
- Memory : Up to 64 GB Supportable
- HDD : 2.5" SATA HDD
- Power supply: 12V DC Input



### Industrial Networking switches:

BL Corporation provides managed / Unmanaged (5 port, 8Port,16 Port ,24 Port) Gigabit Ethernet switch , POE switch, Media Converter, IEC 61850 Certified Ethernet switch, EN50155-Certified Ethernet switch and rackmount Ethernet switch. These options will help users to choose the best option for their solutions.





We serve the following Industrial Products:

1. Industrial Rack mountable Computers (4U,3U,2U,1U).Latest generation with Core i9/i7/i5/i3 , Industrial server grade PC with RAID (0,1,5,10), single Xeon and Dual Xeon CPU based Industrial servers and workstations. Industrial motherboards.
2. Industrial Embedded Fanless Box PC with latest generation CPUs, and I/Os
3. Industrial Fan less Touch Panel PCs (10",12", 15", 15'6", 17",19", 21.5" 24").IP65,IP64,Hazloc, ATEX certified for Zone2, Medical grade touch Panel PC,
4. Industrial Networking Switches (2,4,6,8,16,24,48 Port Managed and Unmanaged), POE switch, Media converters ,(Advantech, MOXA, TP Link, CISCO).IEC-61850 certified switch,
5. Gaming Platform solutions, Industrial Laptop. Tablets Make Panasonic/Getac.
6. Data Acquisition modules- Convertors, Isolators, PCI cards, data acquisition cards.
7. Industrial Monitors- Touch and Non touch panel mount/wall/ Vesa mount monitors.
8. Power supplies (Single and redundant), Panel and Din Rail mount power supply, switching Power supply single output, Dual and multi output series available.
9. Cables and connectors solutions – USB cables/ serial cable/ HDMI cable/VGA Cable. etc.
10. Commercial Desktop, Laptop, Monitor, printer.
11. Interfacing Module (Relay Card).
12. Variable Frequency AC Drive (VFD). ( Micro drive 40W to 400W, 1Ph/230V, 3Ph/415V)
13. SENSORS: Photoelectric Sensor, Micro Photoelectric Sensor, Digital Color Mark Sensor, Inductive Proximity Sensor, Digital Laser Sensor, Digital Fiber Sensor. Area Sensor, Static Control Device, Digital Pressure sensor, Digital Flow sensor, Measurement sensor, Ultrasonic sensor, Capacitive Proximity sensor.
14. Barcode Readers, Barcode Verifiers,
15. Digital Industrial Camera.
16. Transducers: Position Transducers, Pressure Transducers(PT)
17. Speed Reducers, LM Guide, Ball Screw.
18. Stepper Motor: 2Phase & 5 Phase, RTA Stepper Driver.
19. Switchgear Products: ACB, MCCB, SDFU,SDFU,MCM,RCCB,MPCB, Power contractor, Control contractor, Thermal overload relay, Capacitor duty Contractor, Power factor capacitor.
20. Push Button, Selector switches, Digital Panel Meter. Indicating LED Lamp.

#### **Why Industrial Computers :-**

- 1.Industry Operational Conditions .
- 2.Industry Environment Protected.
- 3.Industry Mounting Facilities like Vesa/Panel /wall mount/Pedestal
- 4.Multiple I/O Interfaces –More USB/Com /display ports/PCI and PClex slots.
- 5.Rugged Constructions – Operated on High temperature, shock and vibration .
- 6.All-in One Design with Touch Option—resistive touch / Capacitive touch screen/Multi touch screen.

## **B L CORPORATION**

### **INDUSTRIAL COMPUTER**

Add : Gala No. 4, Sankalp Siddhi Complex, Behind Platinum Hospital, Range Office Gokhiware, Vasai (E) Dist. Palghar - 401208.  
Maharashtra, Tel : 8857975474 Email : santosh@blcorporation.com / info@blcorporation.com